

LENOXX
H510

2000W PANEL HEATER



Batch: PR4266

Model: H510

**PLEASE READ AND RETAIN THESE INSTRUCTIONS FOR FUTURE REFERENCE.
THIS PRODUCT IS INTENDED FOR HOUSEHOLD USE ONLY.**

Read these instructions carefully before attempting to assemble, install, operate or maintain the product. Protect yourself and others by observing all safety information. Failure to comply with instructions could result in personal injury and / or property damage.

The illustrations used in the manual are to illustrate the operation method and structure of the product. Where there is a small difference between the physical item and the illustrations, please take the physical as the standard.



When using this heater, basic precautions should always be taken to reduce the risk of fire, electric shock and injury to persons, including the following:

CAUTION – Due to the high temperature, keep electrical cords, drapery and other furnishings at least 1 meter from the front, side and rear of the heater.

CAUTION - HOT! The heater is hot when it is in use. To avoid burns, do not let bare skin touch hot surfaces.

Safety Warnings:

Please follow all the safety precautions listed below for safety and to reduce the risk of injury or electrical shock.

- Read this Instruction Manual carefully to maximize this appliance's performance and keep for future reference.
- Always ensure that your power supply voltage matches this appliance's rating label.
- Never leave the appliance unattended while in operation. Always unplug the appliance when not in use.
- Caution: Some parts of this product can become very hot and cause burns. Particular attention has to be given when children and vulnerable people are present.

- Always use the handle when moving the heater (if available) or hold on the sides if not available (make sure the unit is turned off). Keep combustible materials such as furniture, pillows, bedding, papers, clothes and curtains at least 1m from the heater.
- Warning: In order to avoid overheating do not cover the heater.
- This appliance can be used by children aged from 8 years and above and persons with reduced physical, sensory or mental capabilities or lack of experience and knowledge if they have been given supervision or instruction concerning use of the appliance in a safe way and understand the hazards involved.
- Children shall not play with the appliance. Cleaning and user maintenance must not be completed by children.
- Children should be kept away unless continuously supervised.
- CAUTION — Some parts of this product can become very hot and cause burns. Particular attention has to be given where children and vulnerable people are present.
- Do not use the product if there are any visible signs of damage to the appliance.
- Do not attempt to repair or adjust any electrical or mechanical functions on this unit. The unit does not contain any user serviceable parts. Only a qualified electrician should perform servicing or repairs. Attempting to repair the unit yourself will void your warranty.
- If the mains cable is damaged it must be replaced by the manufacturer, its service agent, or similarly qualified persons in order to avoid a hazard.
- This product is suitable for indoor use only. Do not operate the appliance in direct sunlight, near heat sources, humid environments or in places near water or other liquids such as bathrooms, shower or swimming pool.
- Do not use this heater in the immediate surroundings of a bath, a shower or a swimming pool.
- Use in a dry and well-ventilated room.
- Do not operate with wet hands or spill water or other liquids on to the appliance the mains cable or plug.
- Do not run the power cable under carpeting. Do not cover the power cable with rugs, runner, or similar coverings. Arrange the power cable away from foot traffic and where it will not be tripped over.
- Do not wind the power cable around the unit.

- Do not insert or allow foreign objects to enter any ventilation or opening on the heater, as this may result in electric shock, fire, or damage to the heater.
- To prevent a possible fire, do not block air intakes or exhaust openings in any manner.
- Do not use on soft surfaces, like a bed, where openings may become blocked. Use the heater on flat, dry surfaces only.
- Do not drop or hit/impact the heater.
- Do not use the appliance in areas where petrol, paints or other flammable substances are used or stored.
- Do not plug the item in before it is wall mounted or set on castors.
- Always position the appliance with the mains plug in an accessible position and avoid the use of an extension cables as they may overheat and create a potential fire risk.
- Always ensure the heater is plugged into a suitable socket.
- Be sure that no other appliances are in use on the same electrical circuit as this product as an overload can occur.
- To disconnect heater, turn controls to OFF, then remove plug from socket. Do not unplug by pulling on the power cable.
- Always unplug the unit and ensure the unit is completely cold before moving, cleaning or storing.
- This heater is intended for domestic use only and should not be used commercially for contract purposes. Any alternative use, not recommended by the manufacturer, may result in fire, electric shock, or injury to persons.
- The use of attachments on the heater is not recommended.
- If the supply cord is damaged, it must be replaced by the manufacturer, its service agent or similarly qualified persons in order to avoid a hazard.
- The heater must not be located immediately below a socket outlet.
- Do not use this heater with a programmer, timer, separate remote-control system or any other device that switches the heater on automatically, since a fire risk exists if the heater is covered or position incorrectly.
- Pay attention that, no combustible material due to wind or other environmental influences covers or obstructs the appliance, such as curtains, marquees, flags, plastic foil etc.

- Never place anything on your heater as this may cause overheating (e.g. towels).
Never use your appliance to dry washing.

IP24 WATER RESISTANCE:

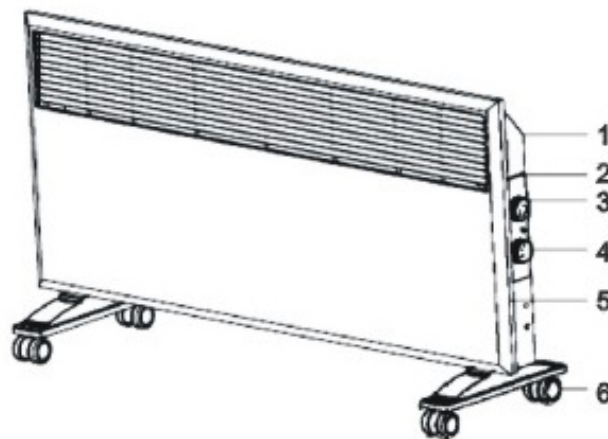
Protected from water spray from any direction

Before use:

- Remove the heater from the box
- Remove all packaging material
- Check the installation parts

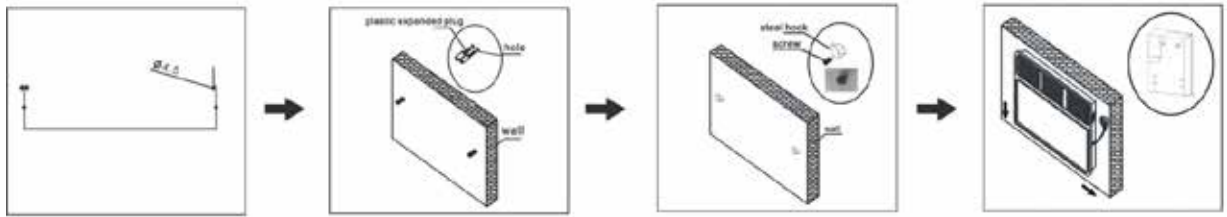
Parts description:

1. Back panel
2. Control panel
3. Temperature control
4. Power switch
5. Front panel
6. Castors



Installation:

1. The panel convector heaters should be wall mounted. Some items can be also set on castors.
2. Mount castors on the baseboard in accordance with scheme G1. For wall mounting study scheme G2.
3. Drill holes in the wall. The diameter of holes should be about 8mm.
4. Fix the bracket with screws.
5. There should be at least 200mm between the bottom edge of the item and the floor. The distance to any other objects should be at least 200mm from the side and 500mm in front.
6. Pay attention to the position of the heater with regard to other objects.
7. The heater must not be located immediately below a socket outlet.



G (2)

Use and controls:

1. Place the heater on flat stable surface.
2. Switch thermostat knob in off position.
3. Plug the heater in.
4. By turning the handle of thermostat clockwise or counterclockwise set the required temperature. For fast heating of the room set the thermostat handle at maximum level. As soon as required temperature will be reached, turn thermostat handle counterclockwise until you hear click. The heating elements will switch off. Indicator light will be also off.
5. Convector will automatically switch on when temperatures decreases, and it will automatically switch off when temperature increases. The comfortable ambient temperature is maintained.
6. If the appliance is not used for a long time--switch it off with power switch and un-plug the heater.
7. Attention! Do not cover the product!

Cleaning and maintenance:

Regular and careful cleaning helps your heater to operate efficiently for many years.

1. Always remove the plug from the power outlet and allow the heater to cool down before cleaning it.
2. Wipe heater with a soft damp (not wet) cloth.
3. It is necessary to remove dust from the surface regularly.

If you are going not to use heater for long time, wipe its surface and put the item inside the box it came in.

WARNING:

Do not immerse the heater in water.

Do not use any cleaning chemicals such as detergents and abrasives.

Do not allow the interior to get wet as this could create a hazard.

Attention: never leave heater unattended!

The item is for household use only.

Attention! The manufacturer does not assume any liability for any damage caused directly or indirectly by not following this instruction manual, general safety rules, or interference in the construction of the product

Specifications:

Model	Voltage	Frequency	Electric Power
H510	220-240v~	50-60Hz	LOW: 1000W HIGH: 2000W


LENOXX

www.lenoxx.com.au

 1300 666 848

 LenoxxElectronics

 LenoxxElectronics

 @LenoxxAustralia