

LENOXX
H210

11-FIN OIL COLUMN HEATER



Batch: PR4266

Model: H210

**PLEASE READ AND RETAIN THESE INSTRUCTIONS FOR FUTURE REFERENCE.
THIS PRODUCT IS INTENDED FOR HOUSEHOLD USE ONLY.**

Read these instructions carefully before attempting to assemble, install, operate or maintain the product. Protect yourself and others by observing all safety information. Failure to comply with instructions could result in personal injury and / or property damage.

The illustrations used in the manual are to illustrate the operation method and structure of the product. Where there is a small difference between the physical item and the illustrations, please take the physical as the standard.



WARNING: FIRE RISK EXISTS WHEN THE HEATER IS COVERED BY OR POSITIONED CLOSE TO CURTAINS OR OTHER COMBUSTIBLE MATERIALS. IN ORDER TO AVOID OVERHEATING, DO NOT COVER THE HEATER



CAUTION - HOT SURFACE

When using this heater, basic precautions should always be taken to reduce the risk of fire, electric shock and injury to persons, including the following:

CAUTION – Due to the high temperature, keep electrical cords, drapery and other furnishings at least 1 meter from the front, side and rear of the heater.

CAUTION - HOT! The heater is hot when it is in use. To avoid burns, do not let bare skin touch hot surfaces.

Safety Warnings:

Please follow all the safety precautions listed below for safety and to reduce the risk of injury or electrical shock.

- Read this Instruction Manual carefully to maximize this appliance's performance and keep for future reference.
- Always ensure that your power supply voltage matches this appliance's rating label.
- Never leave the appliance unattended while in operation. Always unplug the appliance when not in use.
- Caution: Some parts of this product can become very hot and cause burns.

Particular attention has to be given when children and vulnerable people are present.

- Always use the handle when moving the heater (if available) or hold on the sides if not available (make sure the unit is turned off). Keep combustible materials such as furniture, pillows, bedding, papers, clothes and curtains at least 1m from the heater.
- Warning: In order to avoid overheating do not cover the heater.
- This appliance can be used by children aged from 8 years and above and persons with reduced physical, sensory or mental capabilities or lack of experience and knowledge if they have been given supervision or instruction concerning use of the appliance in a safe way and understand the hazards involved.
- Children shall not play with the appliance. Cleaning and user maintenance must not be completed by children.
- Children should be kept away unless continuously supervised.
- CAUTION — Some parts of this product can become very hot and cause burns. Particular attention has to be given where children and vulnerable people are present.
- Do not use the product if there are any visible signs of damage to the appliance.
- Do not attempt to repair or adjust any electrical or mechanical functions on this unit. The unit does not contain any user serviceable parts. Only a qualified electrician should perform servicing or repairs. Attempting to repair the unit yourself will void your warranty.
- If the mains cable is damaged it must be replaced by the manufacturer, its service agent, or similarly qualified persons in order to avoid a hazard.
- This product is suitable for indoor use only. Do not operate the appliance in direct sunlight, near heat sources, humid environments or in places near water or other liquids such as bathrooms, shower or swimming pool.
- Do not operate with wet hands or spill water or other liquids on to the appliance the mains cable or plug.
- Do not run the power cable under carpeting. Do not cover the power cable with rugs, runner, or similar coverings. Arrange the power cable away from foot traffic and where it will not be tripped over.
- Do not wind the power cable around the unit.
- Do not insert or allow foreign objects to enter any ventilation or opening on the

heater, as this may result in electric shock, fire, or damage to the heater.

- Do not drop or hit/impact the heater.
- Do not use the appliance in areas where petrol, paints or other flammable substances are used or stored.
- Do not plug the item in before it is set on castors.
- Always position the appliance with the mains plug in an accessible position and avoid the use of an extension cables as they may overheat and create a potential fire risk.
- Always ensure the heater is plugged into a suitable socket.
- Avoid the use of an extension cord and/or power board as this may overheat and cause a risk of fire.
- Always ensure the heater is plugged into a suitable socket.
- Be sure that no other appliances are in use on the same electrical circuit as this product as an overload can occur.
- To disconnect heater, turn controls to OFF, then remove plug from socket. Do not unplug by pulling on the power cable.
- Always unplug the unit and ensure the unit is completely cold before moving, cleaning or storing.
- This heater is intended for domestic use only and should not be used commercially for contract purposes. Any alternative use, not recommended by the manufacturer, may result in fire, electric shock, or injury to persons.
- The use of attachments on the heater is not recommended.
- If the supply cord is damaged, it must be replaced by the manufacturer, its service agent or similarly qualified persons in order to avoid a hazard.
- The heater must not be located immediately below a socket outlet.
- Do not use this heater with a programmer, timer, separate remote-control system or any other device that switches the heater on automatically, since a fire risk exists if the heater is covered or position incorrectly.
- Pay attention that, no combustible material due to wind or other environmental influences covers or obstructs the appliance, such as curtains, marquees, flags, plastic foil etc.
- This heater is filled with a precise quantity of special oil.
- Repairs requiring the opening of the oil container are only to be made by the

manufacturer or their service agent who should be contacted if there is an oil leakage.

- Regulations concerning the disposal of oil when scrapping the appliance have to be followed. Please contact your local council/recycling centre.
- The heater should not be used in a room, of which the floor area is less than 5 M².

Before use:

- Remove the heater from the box
- Remove all packaging material
- Check the installation parts

Parts description:



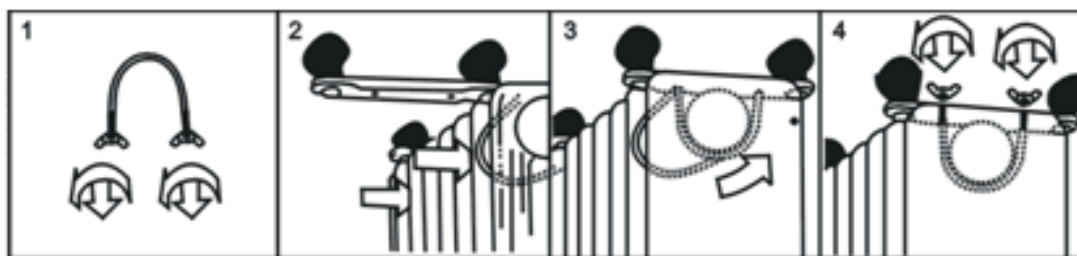
1. Power switch	4. Radiant fins
2. Thermostat knob	5. Castor
3. Cord storage	

Assembly instructions:

The heater is packaged with the feet unattached. You must attach them before operating the heater.

WARNING: Do not operate without feet attached.

Only operate the heater only in upright position (feet on the bottom, controls on the top), any other position could create a hazardous situation.

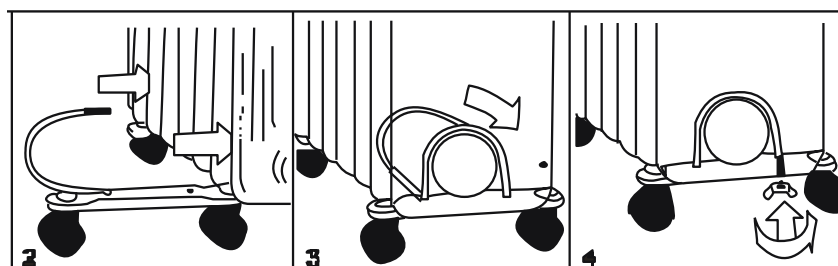


1. Place the radiator body upside-down on a scratch-free location, make sure it is stable and will not fall.
2. Screw off the wing nuts from the U-shaped bolt provided, attach the U-shaped bolt to the U-facing flange between first and second fins (near the front cover).
3. To attach the castor mounting plate to the radiator body, you should insert the threaded ends of the U bolt in the holes on the castor mounting plate.
4. Screw the wing nuts back to the U bolt and fasten the wing nut properly.

Note: do not over tighten, which may cause the damage of radiator flange.

5. Screw off spherical nut from the castor, align the shaft to the hole of the castor mounting plate, insert in, and screw on the spherical nut.
6. Repeat 2, 3, 4 and 5 on the rear of radiator for mounting of the rear castors.

Note: the rear castors must be mounted between the end two fins.



Use and controls:

1. Before using the heater, make sure that it is on a flat and stable surface, damage may occur if it is placed on an incline or decline.
2. Set all the controls to OFF position and insert the plug into a power outlet.
3. Rotate the thermostat knob clockwise to MAX position and switch the heater on as follow: the switch I for low heat, the switch II for medium heat and both switches on for high heat.
4. When your room reaches the desired temperature, now slowly rotate the thermostat knob counterclockwise until the pilot light goes out. The thermostat can now be left at this setting. As soon as the room temperature has dropped below the set temperature, the unit will switch itself on automatically until the set temperature has been reached again. In this way the room temperature remains constant with the most economical use of electricity.
5. If you want to change the room temperature setting, rotate the thermostat knob clockwise to raise the temperature, or counterclockwise to lower it.
6. This heater includes an overheat protection system that shuts off the heater when parts of the heater are getting excessively hot.
7. To completely shut the heater off, turn all the controls to OFF, and remove plug from the power outlet.

Cleaning and maintenance:

1. Always remove the plug from the power outlet and allow the heater to cool down before cleaning it.
2. Wipe heater with a soft damp (not wet) cloth.
3. To store away the heater, wind the cable round bobbin and store the heater in a clean dry place.

WARNING:

Do not immerse the heater in water.

Do not use any cleaning chemicals such as detergents and abrasives.

Do not allow the interior to get wet as this could create a hazard.

Attention: never leave heater unattended!

The item is for household use only.

Attention! The manufacturer does not assume any liability for any damage caused directly or indirectly by not following this instruction manual, general safety rules, or interference in the construction of the product.

Specifications:

Model	Voltage	Frequency	Electric Power
H210	220-240v~	50Hz	LOW: 1000W MEDIUM: 1400W HIGH: 2400W


LENOXX

www.lenoxx.com.au

 1300 666 848

 LenoxxElectronics

 LenoxxElectronics

 @LenoxxAustralia